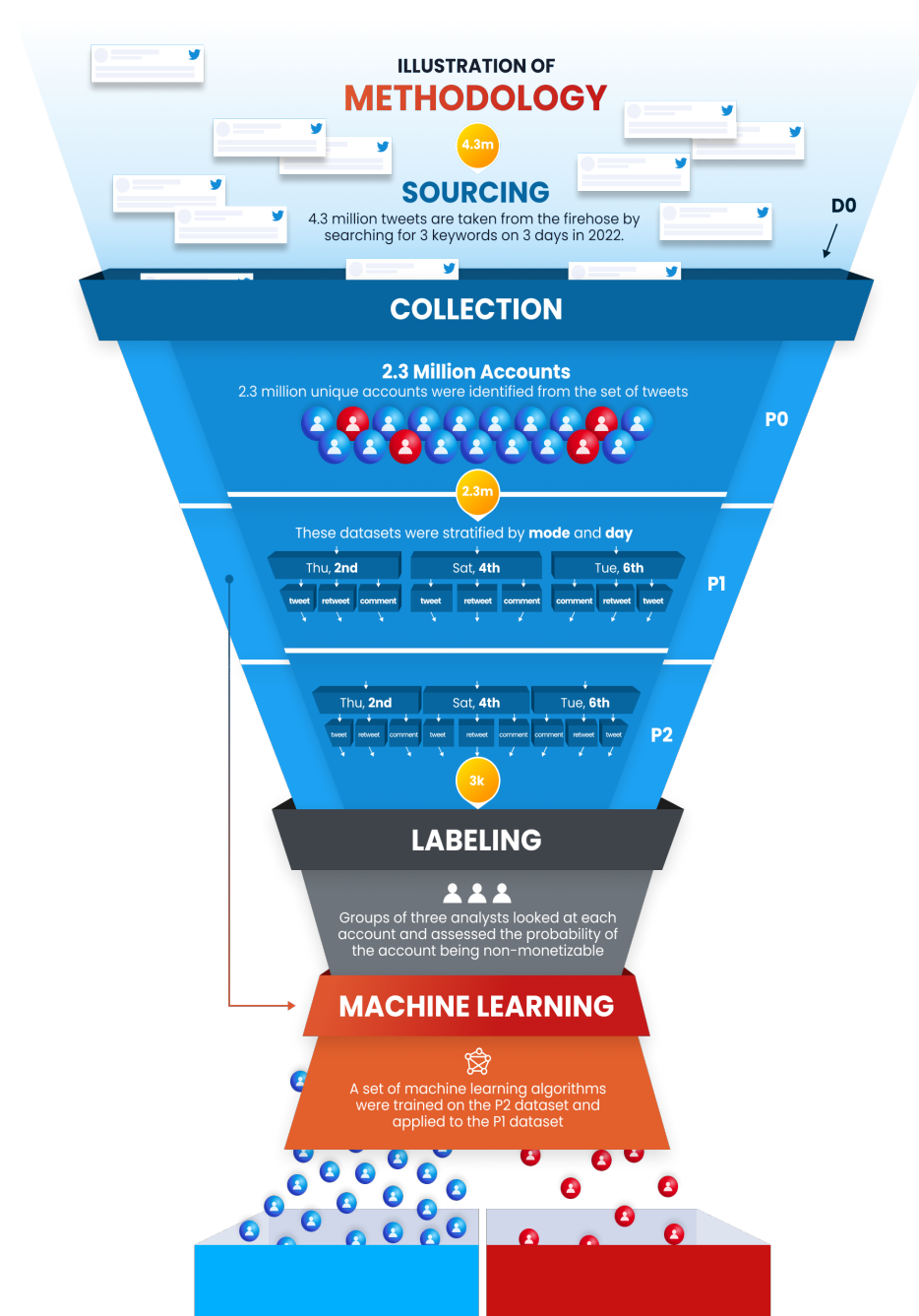


OSINT TRADECRAFT, TECHNOLOGIES, HUMAN RESOURCES



KEYWORD DETECTION



1.1k Speaker 11: Bombo Radyo La Union

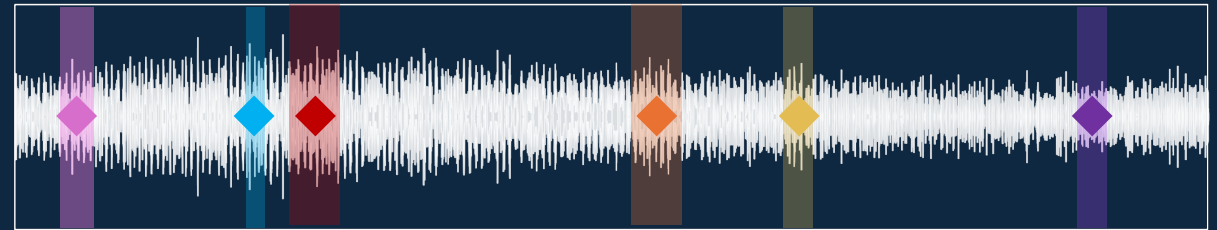
one month ago 24 Jan 2025 - 10:00 GMT

Bombo Radyo La Union

Transcription of audio content in Tagalog, including a 'view more' link.

Joe Biden Beijing China United States

South Korea International Relations Soft Power



NO HARMFUL SPEECH

Marcos is 100% wrong -- this won't help regular Filipinos AT ALL. I absolutely hate this decision.

INDIVIDUAL INSULT

President Marcos is so stupid for how he's cozying up to China. He's too dumb to realize he's just giving away our country!

THREAT TO INDIVIDUAL

If Marcos ever comes to Malacanang, he'd better watch his back. We'll be coming for him...and it won't be pretty.

GROUP INSULT:

This is just proof that Chinese immigrants are a stain on our country. They bring nothing but misery to real Filipinos.

INFLAMMATORY RHETORIC

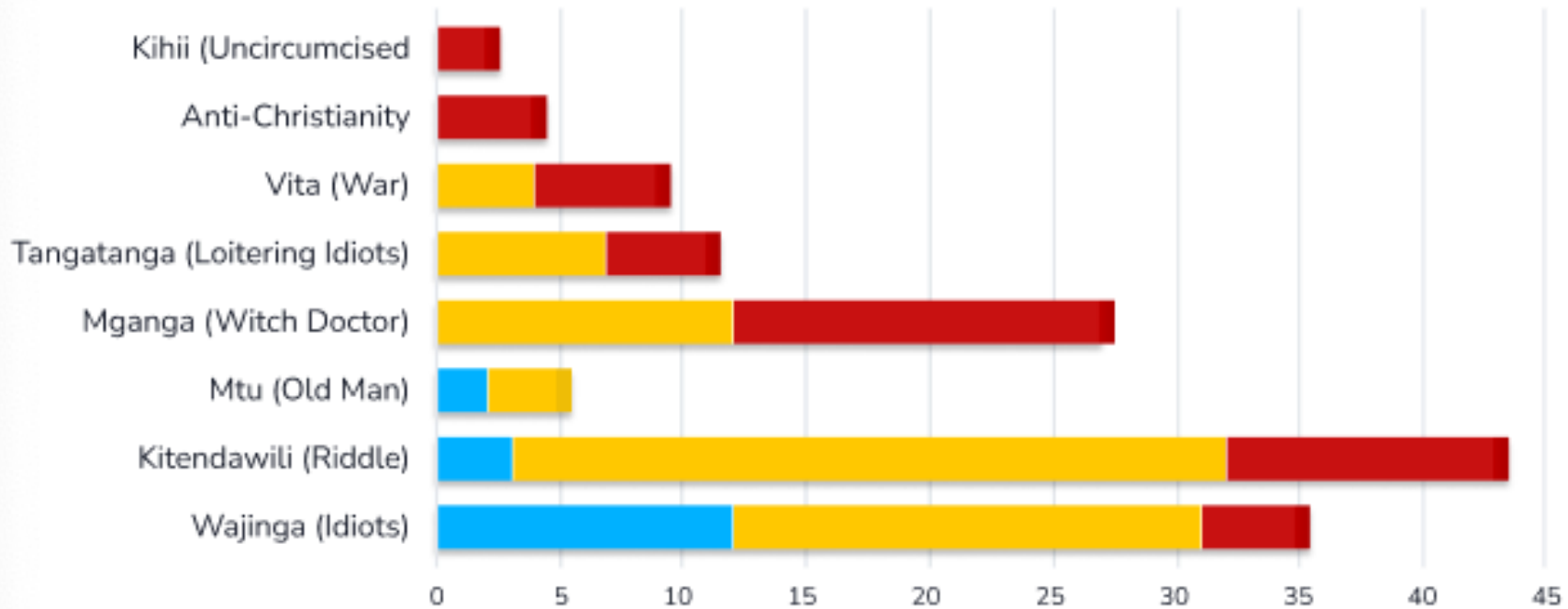
If you ever see a Chinese immigrant, rough them up a bit. They all need to be taught a lesson that they aren't welcome here.

HATE SPEECH

Ugh these dirty Chinese pigs need to be taken to the slaughterhouse. Who's with me?

PREVALENCE OF INFLAMMATORY WORDS/PHRASES BY SEVERITY OF RHETORIC

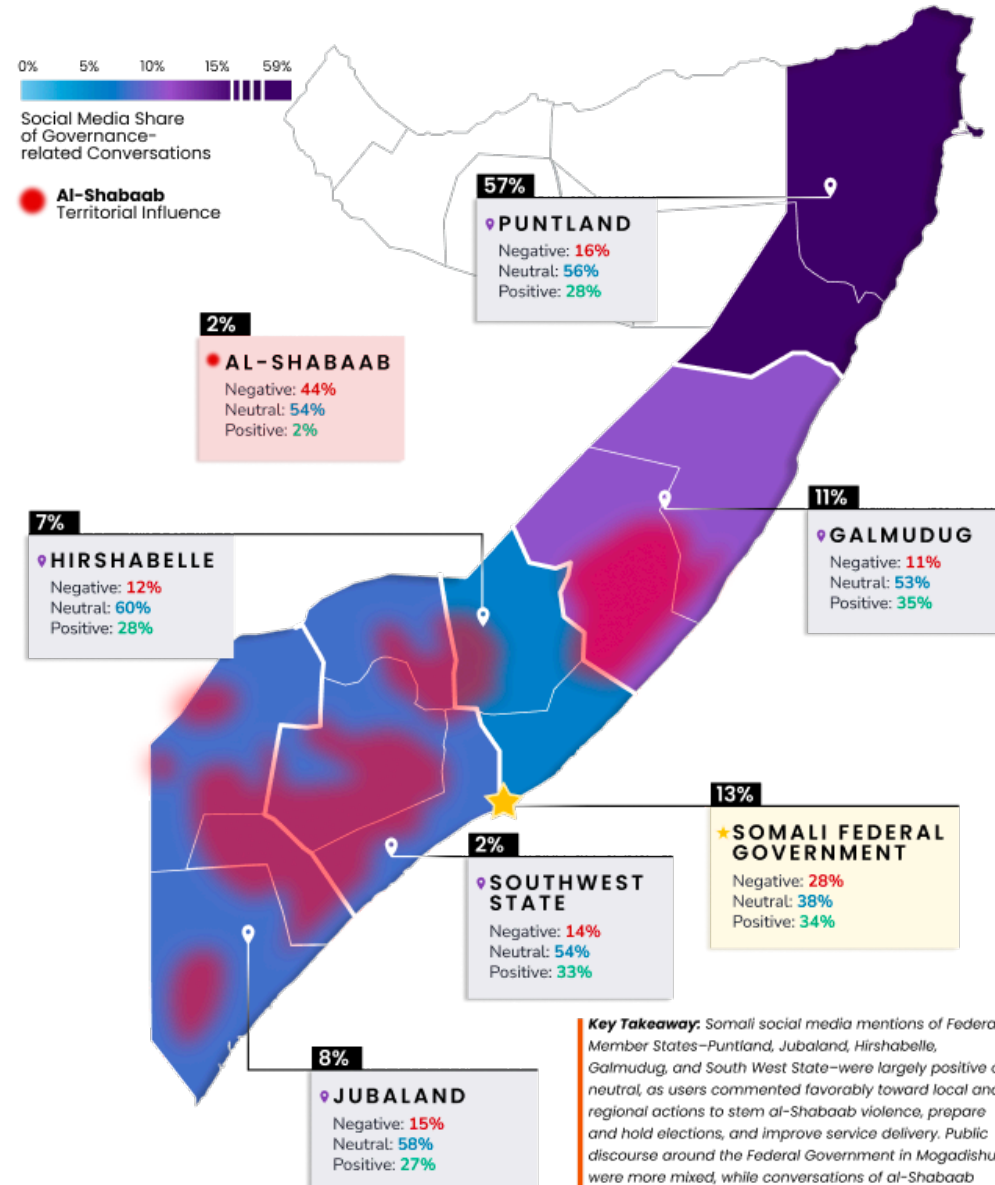
High Medium Low



Detection of a small presence of **terms associated with ethnic and religious hate speech on Kenyan social media** in late July 2022.

While most users used the terms to rally support for their candidates along ethnic lines without calling for violence, subsequent warnings against inciting violence suggest **growing concern for stability among Kenyans**.

COMPARATIVE SOCIAL MEDIA SENTIMENT TOWARD AL-SHABAAB, SOMALI GOVERNING ENTITIES



Key Takeaway: Somali social media mentions of Federal Member States—Puntland, Jubaland, Hirshabelle, Galmudug, and South West State—were largely positive or neutral, as users commented favorably toward local and regional actions to stem al-Shabaab violence, prepare and hold elections, and improve service delivery. Public discourse around the Federal Government in Mogadishu were more mixed, while conversations of al-Shabaab governance were largely negative.

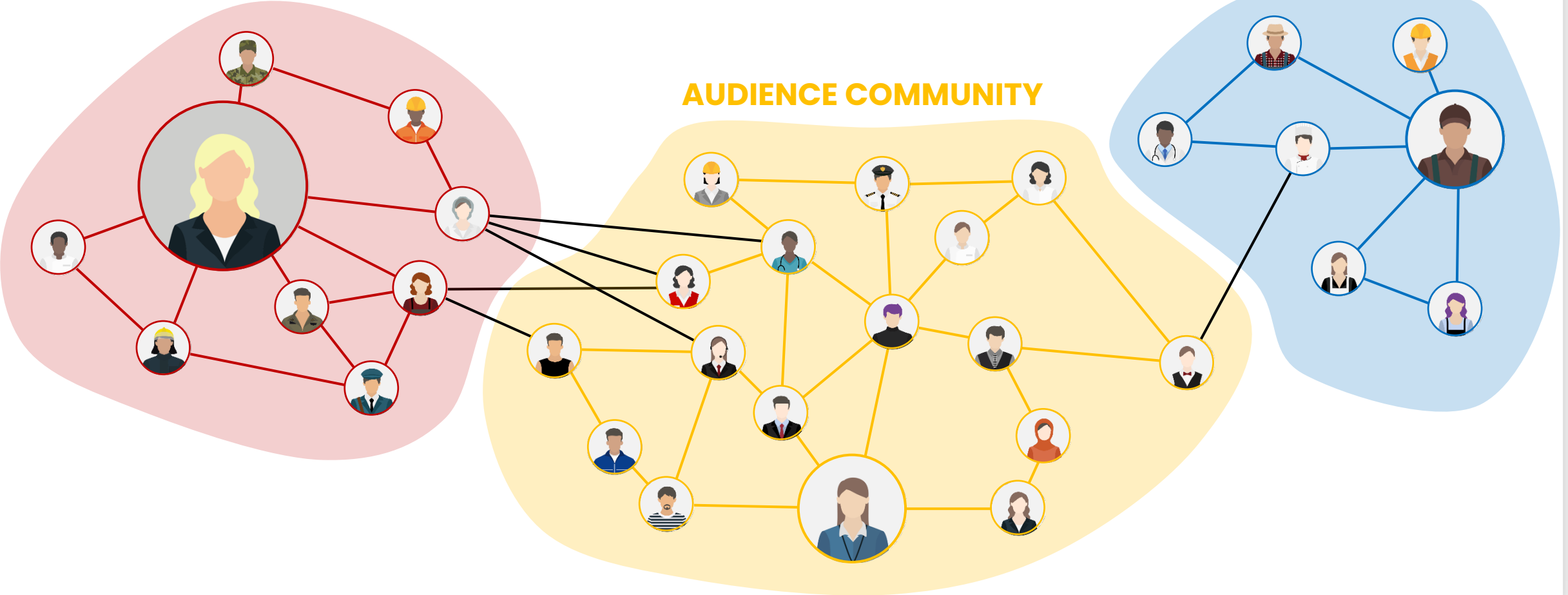
COMMUNITY STRUCTURE IN THE INFORMATION ENVIRONMENT

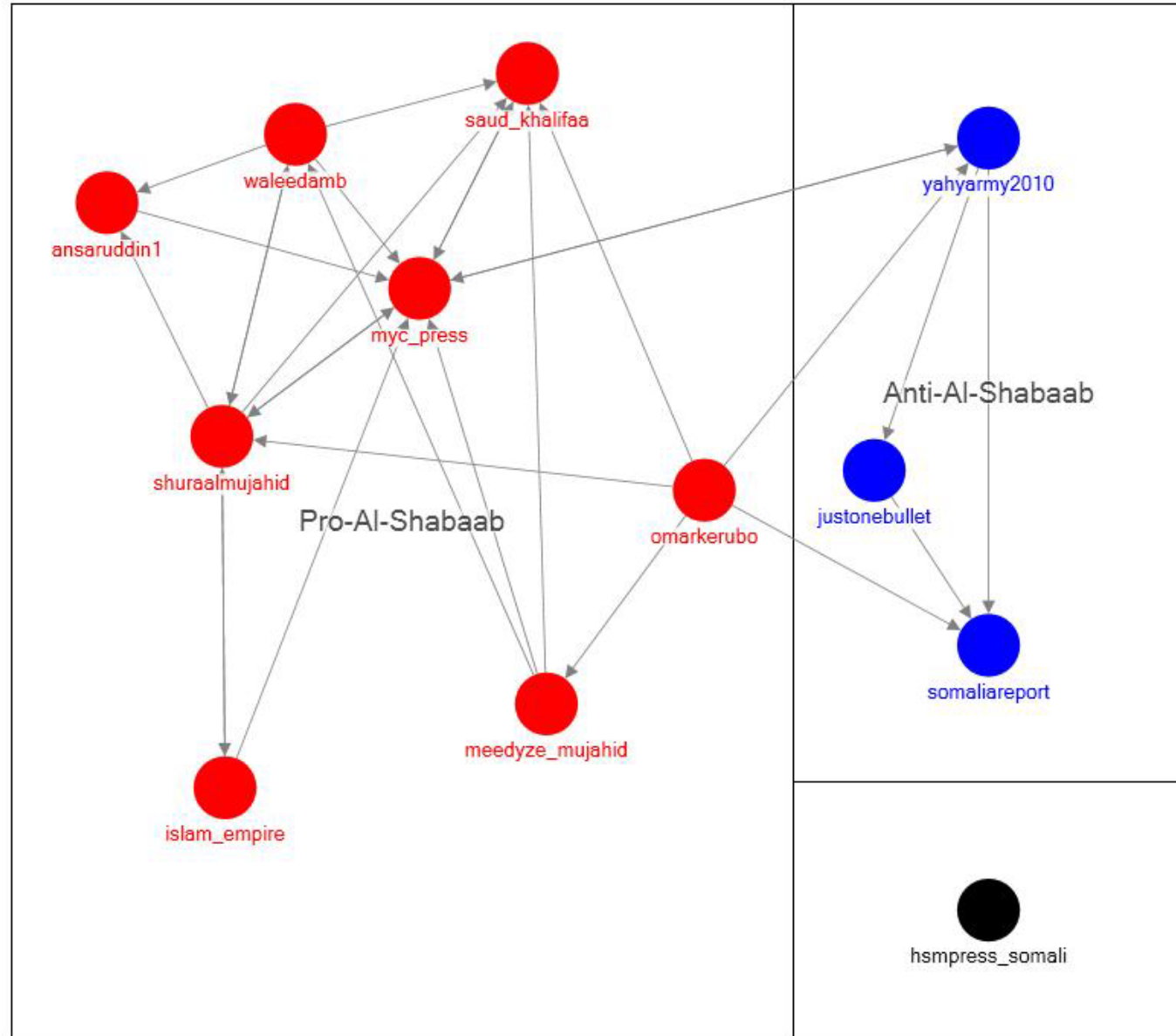


How does influence propagate from **source** to **audience** community?

SOURCE COMMUNITY A

SOURCE COMMUNITY B





**SUBJECT MATTER EXPERTS
& WISE CROWD**

DEVELOPERS

ANALYSTS

DATA SCIENTISTS

COMMUNICATORS, DESIGNERS

