



CAPTURING LESSONS LEARNED FROM SECURITY SERVICES'
ENGAGEMENT WITH LOCAL COMMUNITIES IN EAST AFRICA

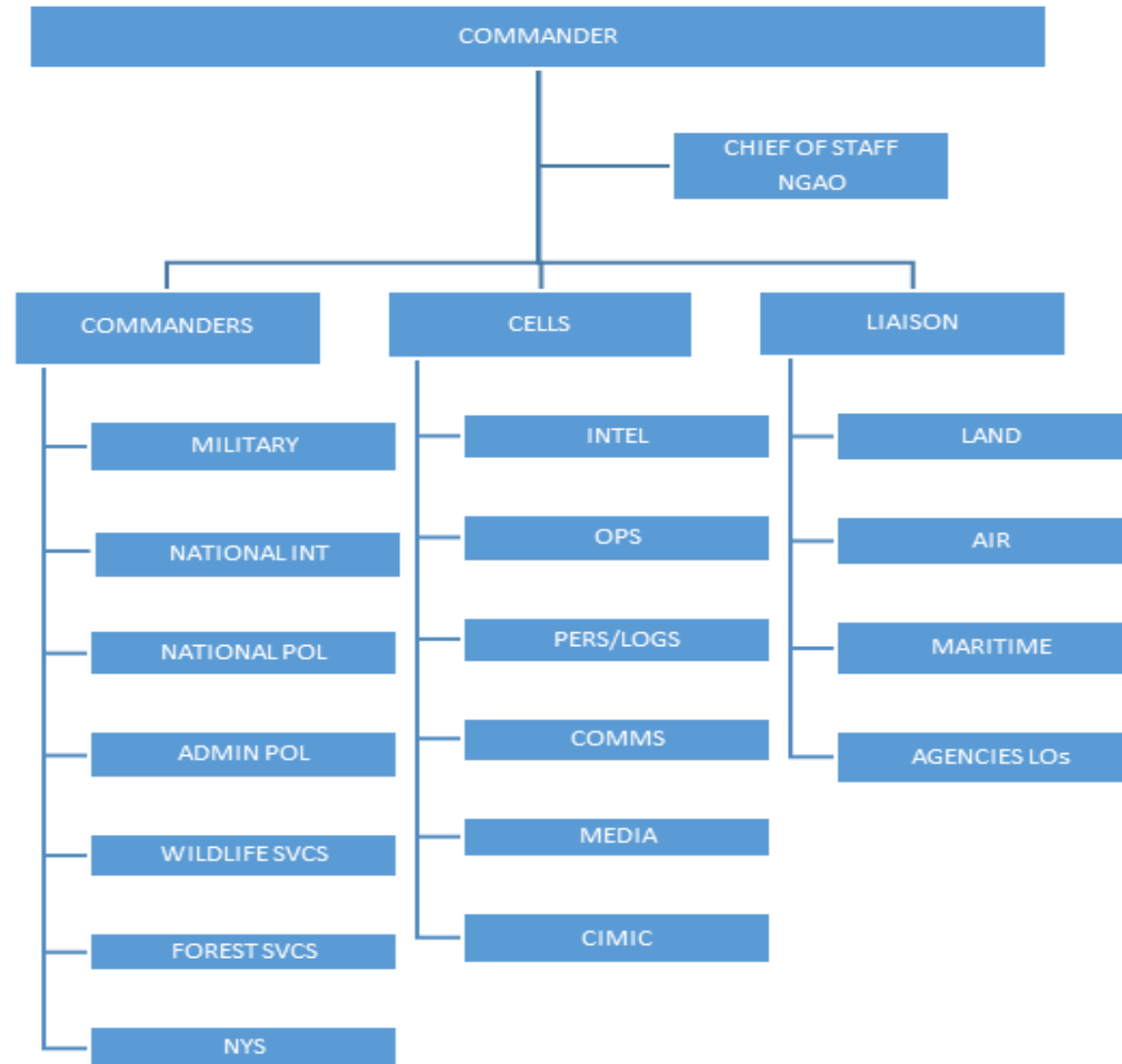
BONI FOREST EXPERIENCE

OPERATIONS IN BONI FOREST



- Situated on the north-east coast of Kenya near the Kenya Somalia border.
- The onset of ops in Boni forest 14 June 2014
- The multi-agency approach to operations – All govt approach
- Multi-Agency Comd Center

MULTI AGENCY COMMAND CENTER



CIMIC ACTIVITIES

RELIEF FOOD



WATER DISTRIBUTION



SENSITIZATION OF THE LOCALS



ROAD CLEARANCE



REABILITATION WATER PANS



MEDICAL CAMP



CASEVAC



CIMIC ACTIVITIES

AFORESTATION

CASEVAC



CVE OUTREACH



SECURING VITAL INSTALATIONS



KLE



CHALLENGES

- Unwillingness of the locals to participate in activities fronted by the multi-agency teams
- Victimization of locals who collaborated
- Difficulty in distinguishing between an adversary and the locals
- Double agents



LESSONS THAT CAN BE LEARNED FROM BONI OPERATIONS

- A doctrine complete with SOPs is critical
- Some policies infringe on the locals' lifestyle leading to hostility
- The adversary enjoys FOA/FOM when sy forces are not present
- Winning hearts and minds critical - CIMIC
- KLE is vital in collaborating with the locals
- Outreach programs are important
- Human intelligence is critical in counterterrorism...
- Double agents are always present – Kidnap of a foreigner