



**REPUBLIC OF KENYA**

**DIRECTORATE OF CRIMINAL INVESTIGATIONS**

**ANTI-TERRORISM POLICE UNIT**

**ENGAGEMENT WITH LOCAL  
COMMUNITIES IN COUNTERING VIOLENT  
EXTREMISM**

# Introduction-Threat Scenario

**GTI**

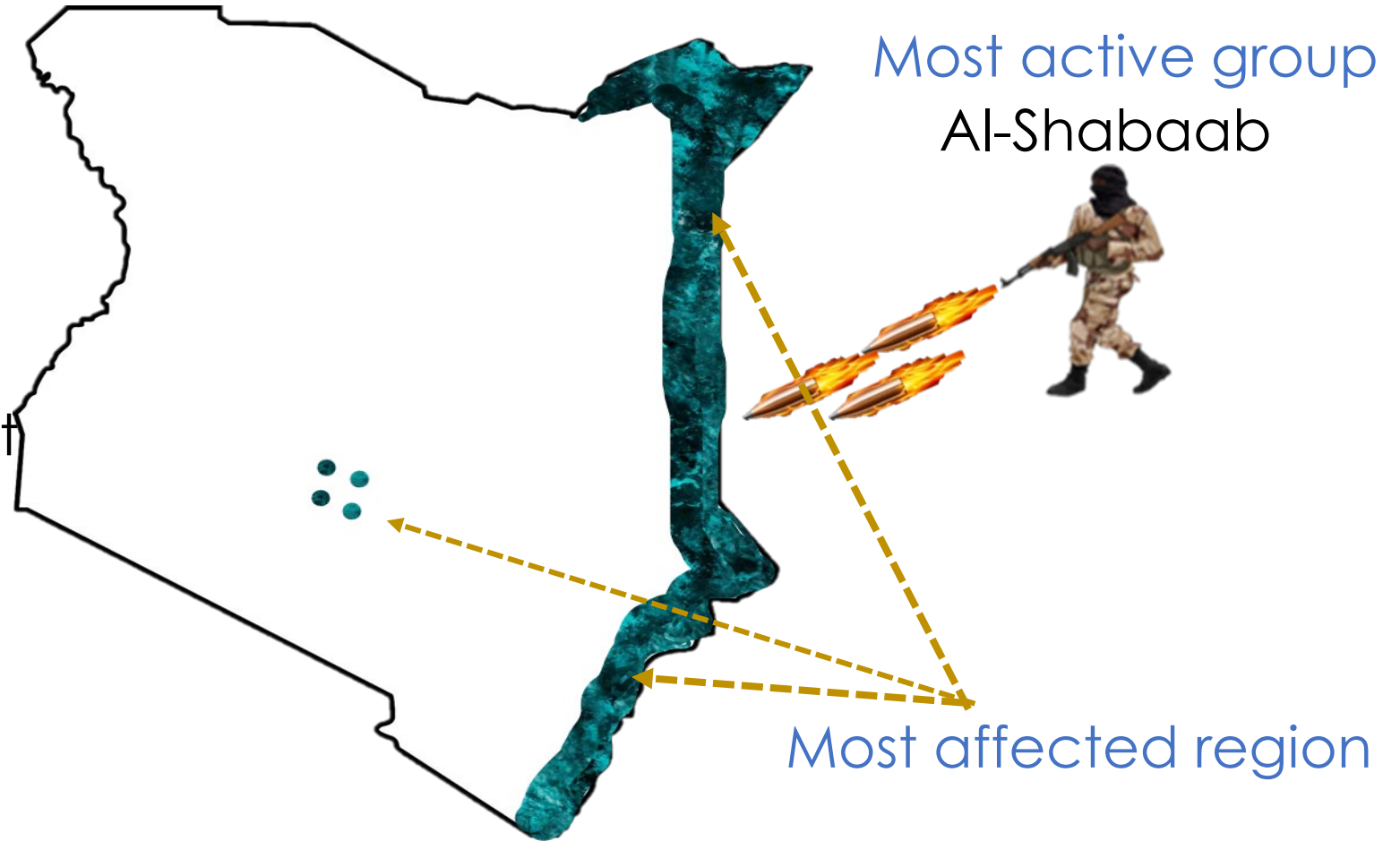
Position 20

Primary target

Civilians, Security  
Personnel & government  
officials

Tactic & trend

IED and Firearms



# AS Agenda and Strategy



**Immediate:** Forcing the removal of AMISOM

**Medium term:**

Undermining legitimacy & territorial integrity of FGS

**Strategic partnerships:**

Affiliating to AQ to receive support

**Long term:**

Establishing local jihad and 'exporting' it to regional countries

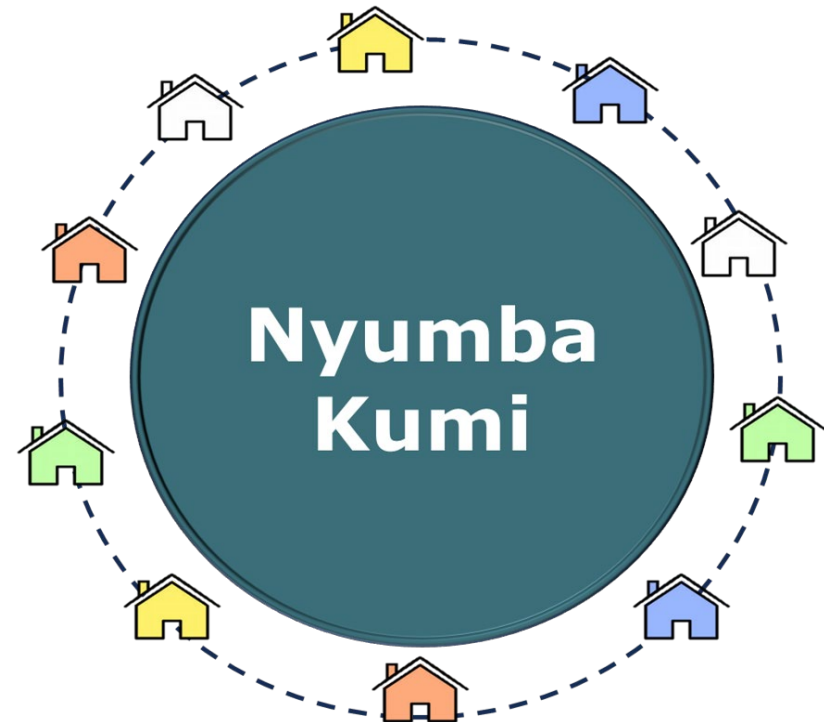
**Regional plan:**

Extending Khilafah to neighboring countries; Engaging in regional operations targeting AMISOM

# The Practice of Community Policing in Kenya

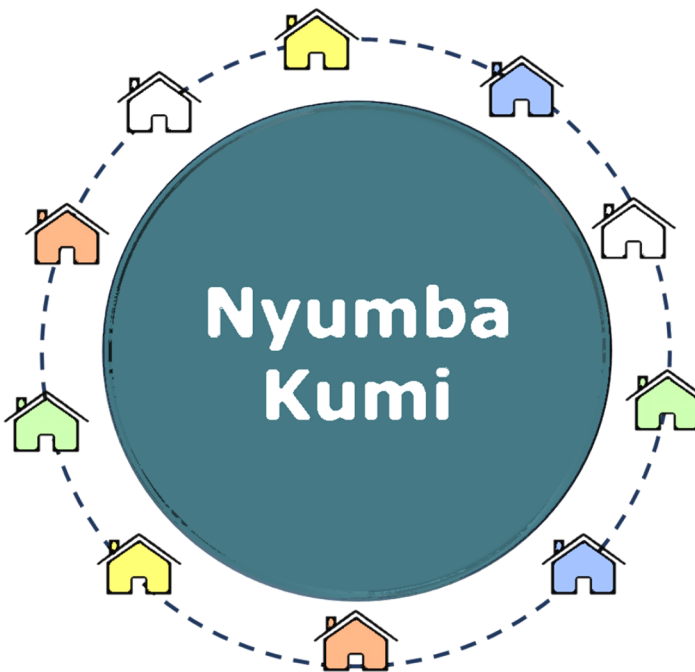
Strategy for anchoring community policing at the lowest level of administrative organization

Initiative brings Kenyans together into clusters defined by physical location and common interest



# Engagement with communities in CVE

Raise awareness of current terrorism and crime issues

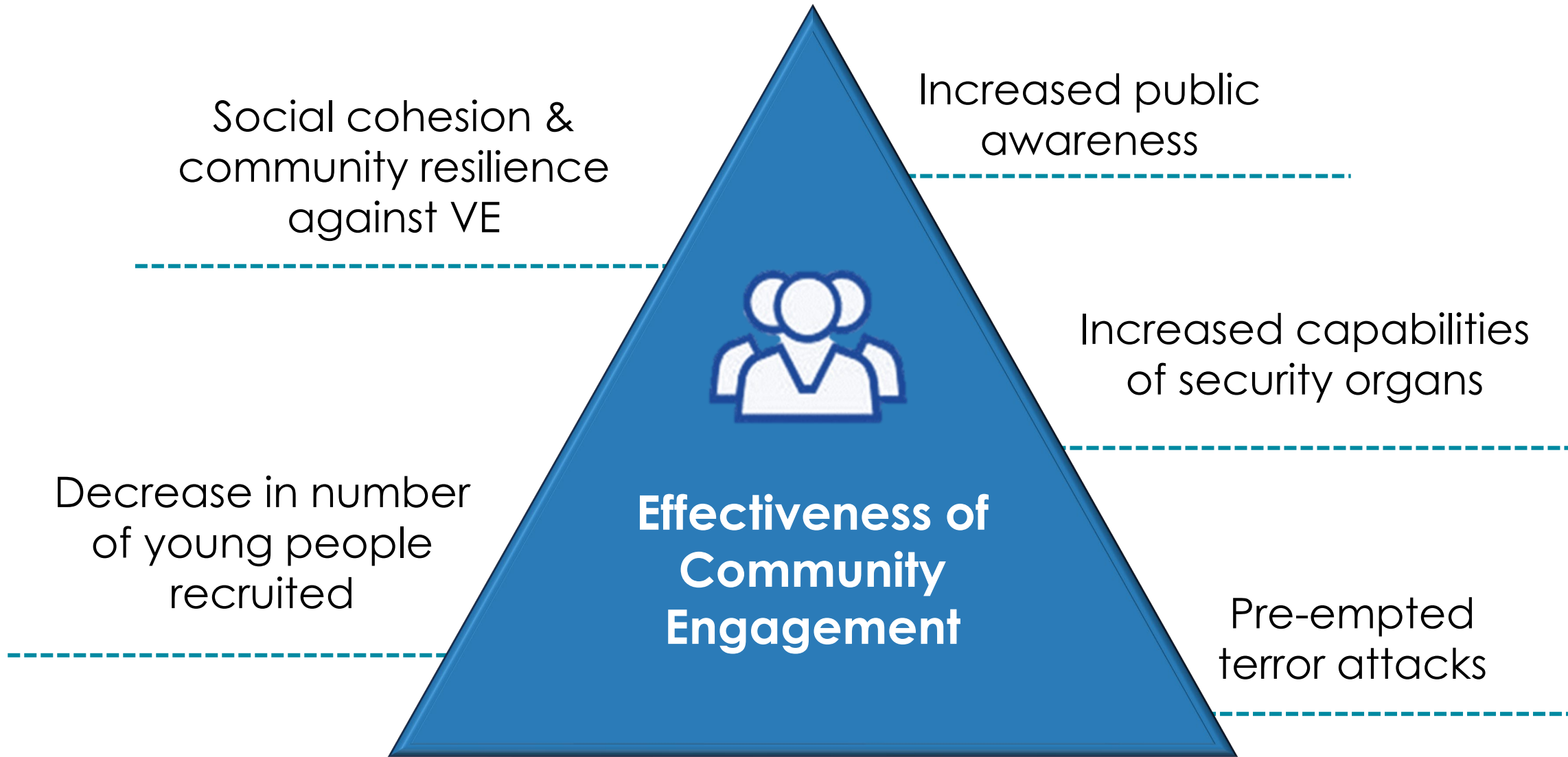


Monitor security threats and provide information

Share and gather information

Seek solution for defeating terrorism & crime

Improve cooperation between local authorities police and the public



Social cohesion & community resilience against VE

Increased public awareness



**Effectiveness of  
Community  
Engagement**

Increased capabilities of security organs

Decrease in number of young people recruited

Pre-empted terror attacks

Adopt a comprehensive/collaborative approach to address root causes of VE

Control of other crimes related to/supporting terrorism



Early detection and intervention

Strengthen regional and international cooperation



Invest in capacity building



Review of legislative framework



# Thank You

[sirsantos@rocketmail.com](mailto:sirsantos@rocketmail.com)