

A warm welcome



Eco-warning on the illegal exploitation of natural resources (timber) and cross-border security

The case of the Minkébé forest block and Operation Pandora



Contents

1. History of national parks, Institutional framework, ANPN's Missions, Legal framework
2. Effective presence and daily monitoring: Eco guards and benefits
3. Archiving statistics on surveillance and anti-poaching activities
4. Insecurity: The case of Minkébé
5. Operation "*Pandora*"
6. Some proposed solutions for the Minkébé forest block

1. History of national parks, Institutional framework, ANPN's Missions, Legal framework

History of national parks

Institutional framework

- Presidency of the Republic,
- Ministry of Water and Forests,
- National Parks Agency:
 - Scientific and environmental public body responsible for managing national parks
- Provincial courts and the specialised court in Libreville.

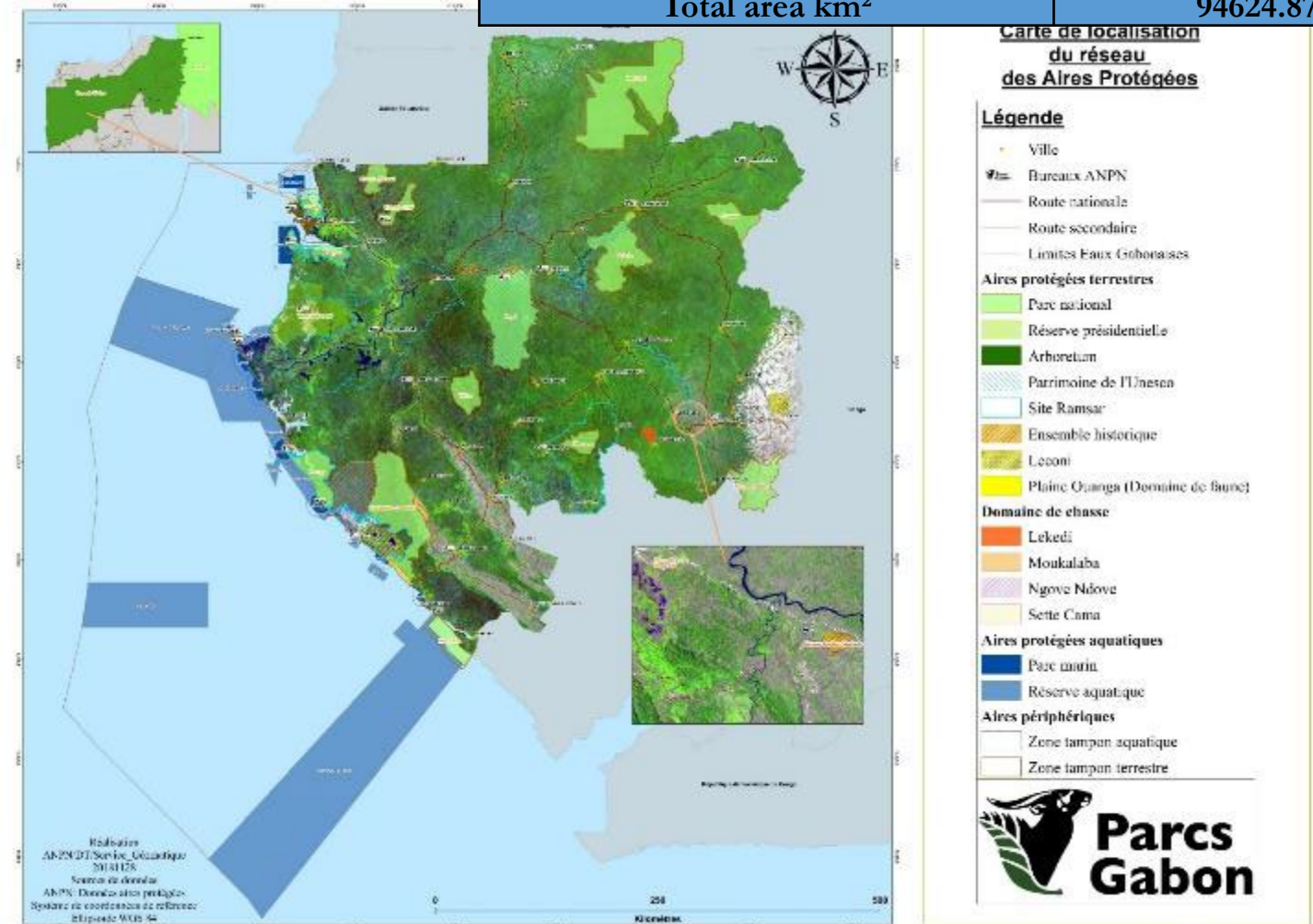
ANPN's missions

- Ensuring that protected areas are constantly monitored,
- Involving local communities in the protection and enhancement strategy,
- Developing strategies to mitigate human-wildlife conflict
- Promoting natural tourist attractions and encouraging scientific research.

Legal framework

- National Parks Act (Act no. 003/2007 of 27 August 2007)
- Forestry Code (Act no. 016/2016 of 31 December 2016)
- Mining Code (Act no. 037/2018 of 11 June 2019)
- Criminal Code (Act no. 042/2018 of July 2019)

Year of creation	Protected area type	Surface area (Km ²)
2002	Land	30520
2009	Aquatic	11370
2011	Land	67.47
2017	Aquatic	52667.4
Total area km²		94624.87



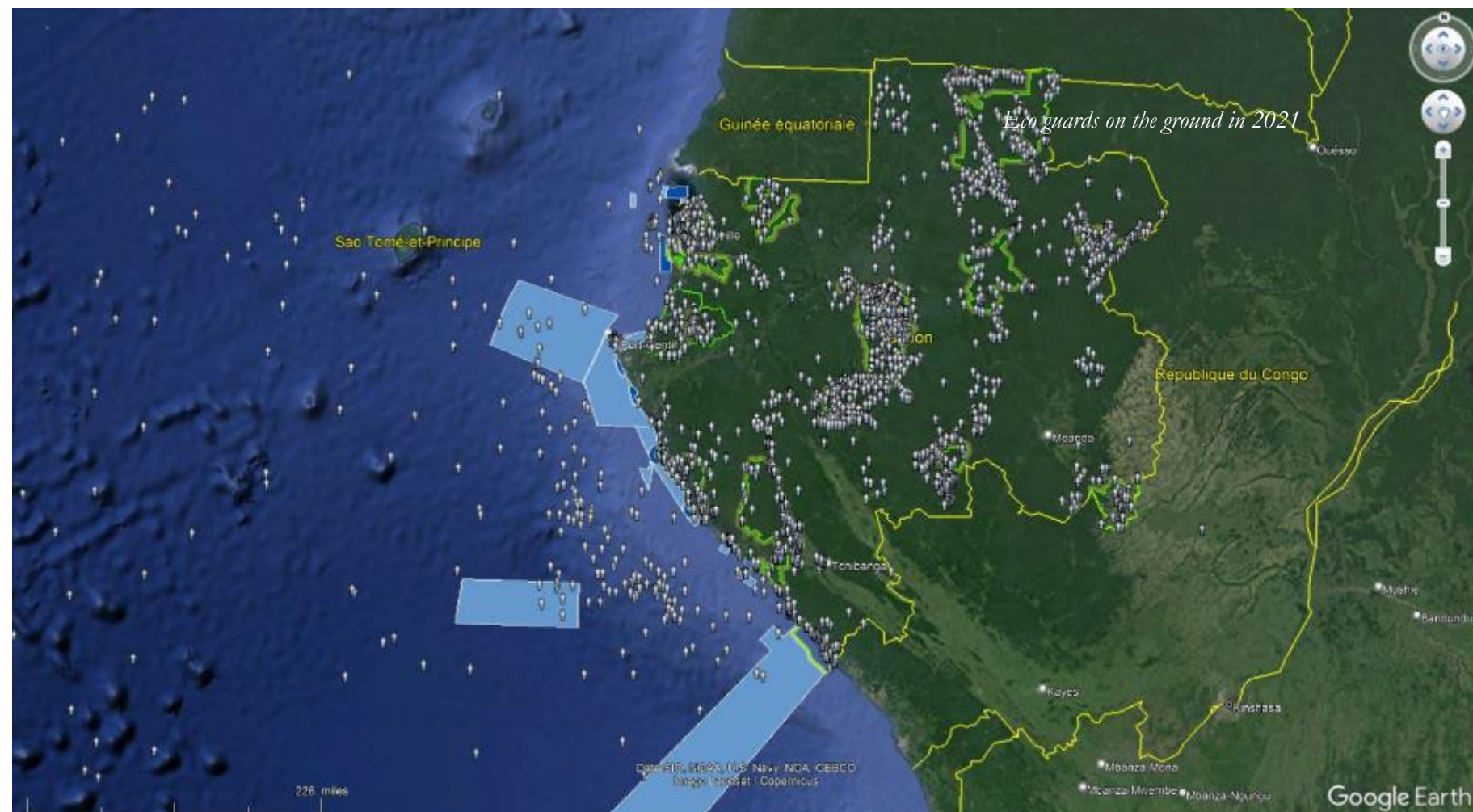
2. Effective presence and daily monitoring: Eco guards and benefits

Eco guard

- Present everywhere, especially in the most remote areas (towns, villages, camps, forests and seas).
- As long as possible
- Near-real-time monitoring
- Regular, dynamic, easily accessible and secure archiving.

Benefits

- Knowledge of motorable tracks and roads and the large number of navigable waterways
- Control and mapping of the main hunting trails
- Up-to-date knowledge of high-value natural and mining resource areas
- Estimated patrol effort (number of men/day, kilometres patrolled, hours patrolled, etc.)

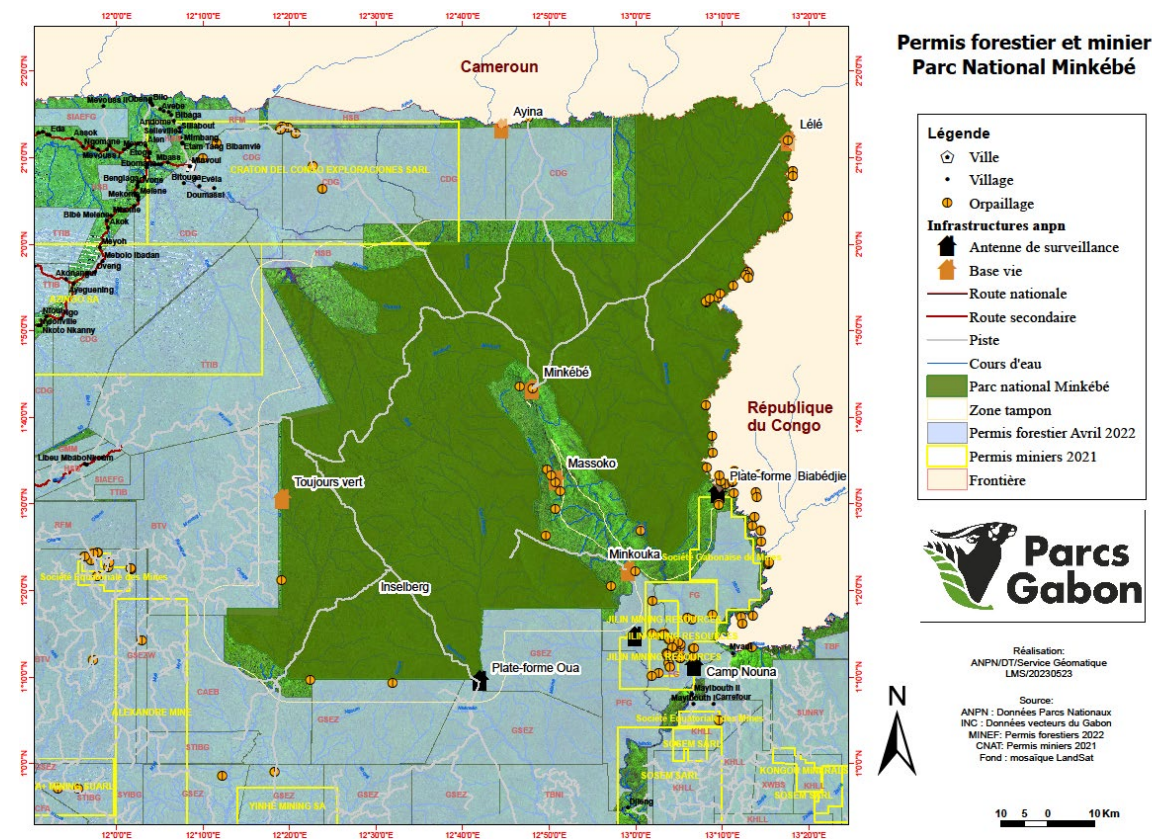
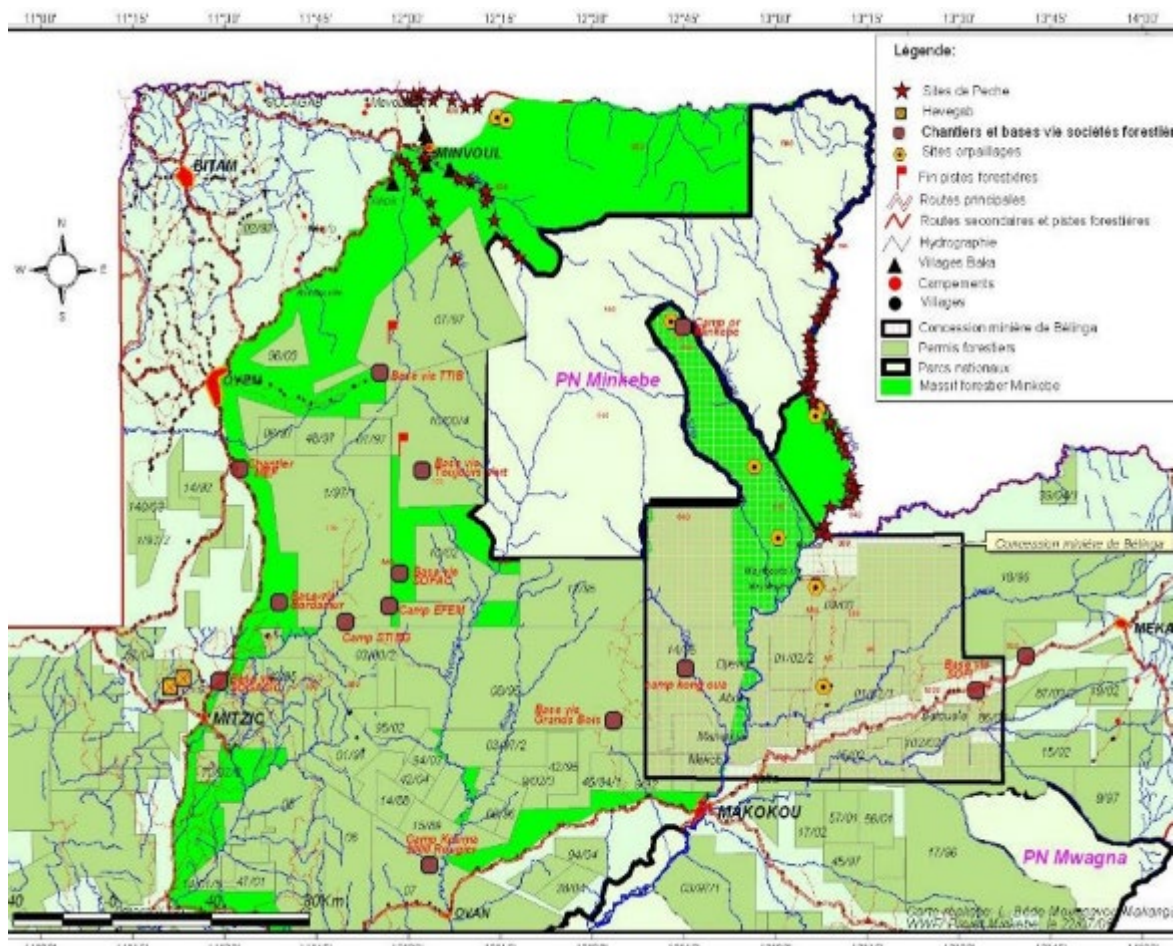


3. Archiving and statistics on surveillance and anti-poaching activities

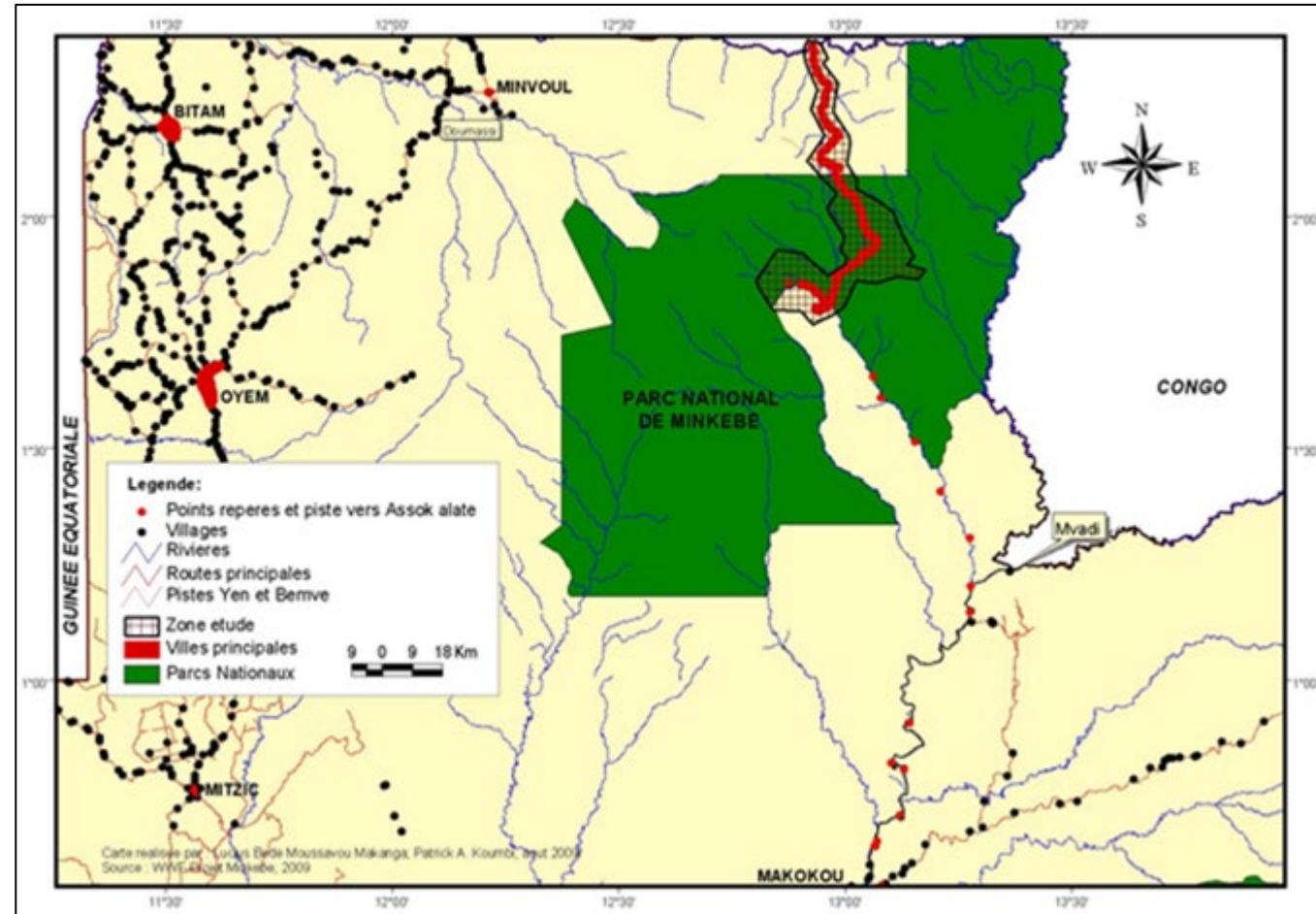
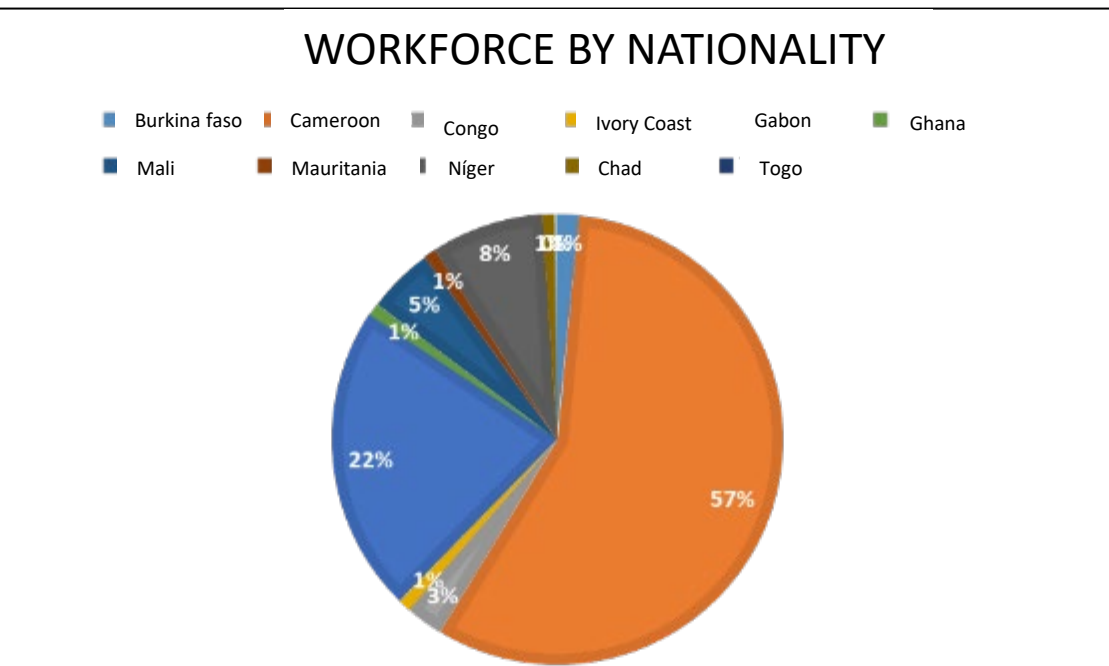
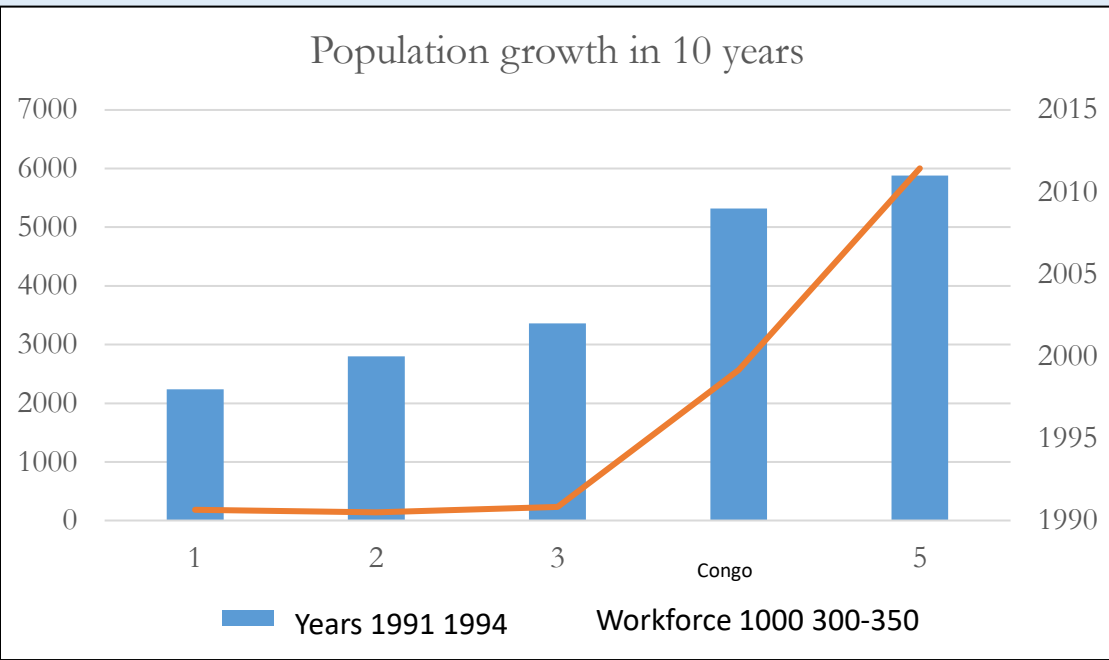
<i>Statistics on anti-poaching surveillance activities 2022</i>	AKANDA	PONGARA	CRYSTAL MOUNTAINS	LOANGO	MOUKALAB A DOUDOU	MAYUMBA	MINKEKE	IVINDO	MWAGNA	LOPE	WAKA	BATEKE TRAYS	BIROUGOU	APA PORT-GENTIL	RAMSAR BAS OGOOUE SITE
Number of missions	30	28	11	58	45	93	49	47	30	27	28	20	-	12	10
Number of mission days	468	214	152	744	714	481	682	745	409	154	385	281	-	153	179
Number of days patrolled	457	172	130	665	664	442	415	615	322	147	331	205	-	109	175
% of days patrolled	98	80	86	89	93	91	61	83	79	95	81	73	-	71	98
Total distance	6634	7503	754	20361	11738	13835	15136	649	6873	1954	4332	6779	-	15791	4039
INFORMATION ON SEIZURES MADE															
Rifle	0	9	5	8	14	0	6	1	0	0	7	6	-	0	2
Ammunition	0	26	0	31	28	0	34	1	0	0	23	24	-	0	0
Game parts	0	139	152	46	23	0	31	0	0	0	0	84	-	0	49
Motors	11	43	0	5	0	10	3	0	0	0	0	0	-	76	0
Ivory tips	0	0													
Nets	9	40	0	13	3	18	1	0	0	0	0	0	-	61	0
Chainsaws	4	0	6	2	0	0	0	0	0	0	1	0	-	0	0
INFORMATION ON ELEPHANT CARCASSES															
Poached	0	2	1	1	1	0	1	0	0	1	0	0	-	0	0
Natural death	0	0	1	0	0	0	1	0	0	0	1	0	-	0	0
Killed by train	0	0	0	0	0	0	0	0	0	2	0	0	-	0	0
Unidentified cause of death	0	0	0	6	3	0	0	1	0	1	0	0	-	0	0
Legal death	0	0	0	1	0	0	0	0	0	0	1	0	-	0	0
Collected ivory tips	0	0	2	12	1	0	2	1	0	3	2	0	-	0	0

4. Insecurity: the case of Minkébé

- From towns to living bases for surveillance antennas, eco-guards have a high probability of encountering offences relating to the illegal exploitation of natural resources (timber, mining, poaching, etc.),
- Major mining potential
- Major forestry potential: more than fifty forestry permits
- Illegal immigration



4. Insecurity: the case of Minkébé



Transminkebienne in 2009

4. Insecurity: the case of Minkébé

- 2011
 - 6,000 workers
 - Estimated daily production 5 kg, i.e. CFAF 100 million and CFAF 35 billion per year (source: ANPN)
 - Gold price: USD 1,000 in 2010, rising to USD 1,900 by the end of 2011.
 - The workers are mainly illegal immigrants of African origin.
 - Same period of gold prospecting around the Minkébé site over a distance of more than 8 km GPS in 2011
 - Destruction and closure of the gold site:
 - embittered population,
 - falling revenues,
 - a feeling of abandonment by the State,
 - population predisposed to ...



5. Operation "Pandora"

Context

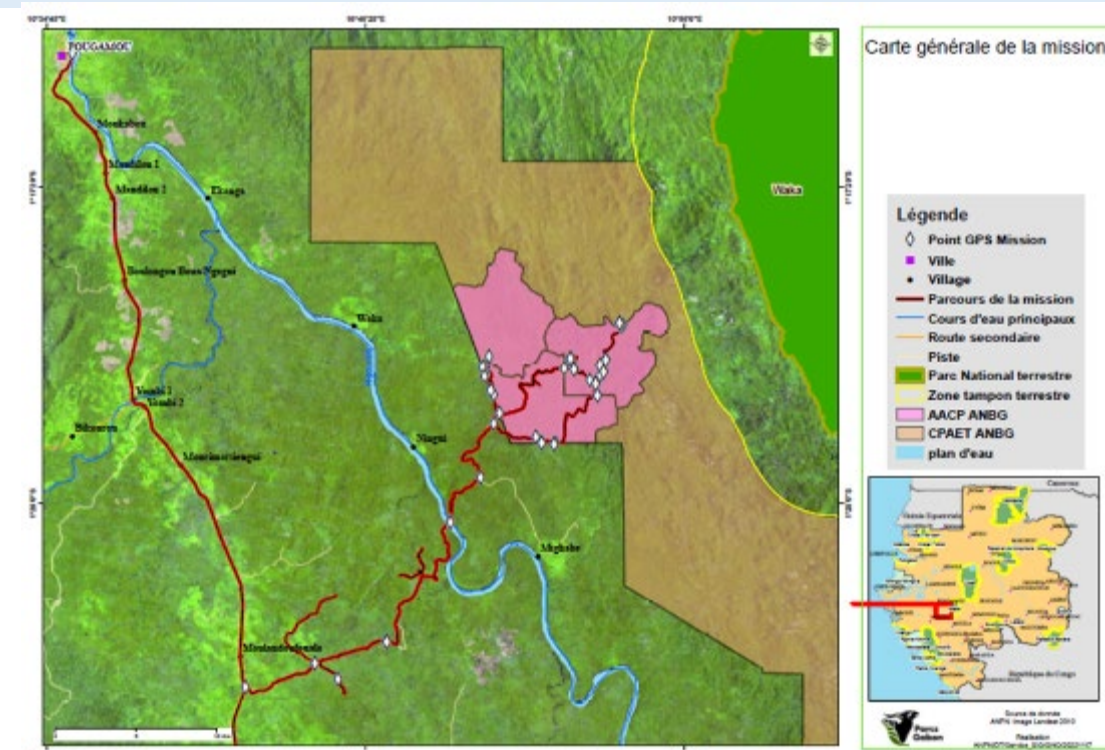
Following information from the field relayed by various sources and on the instructions of the Director General of Forests and the task force, the following institutions: ANPN, DGR, Contre Ingérence, Police Judiciaire, Parquet... will be deployed to investigate illegal logging.

Goal

1. Check the legality of activities carried out by operators in the timber and gold sectors;
2. Track down poachers inside and outside forest concessions;
3. Gather useful information from local residents.

Service area

Immediate periphery of the buffer zone of the Waka National Park, ANBG company CAA



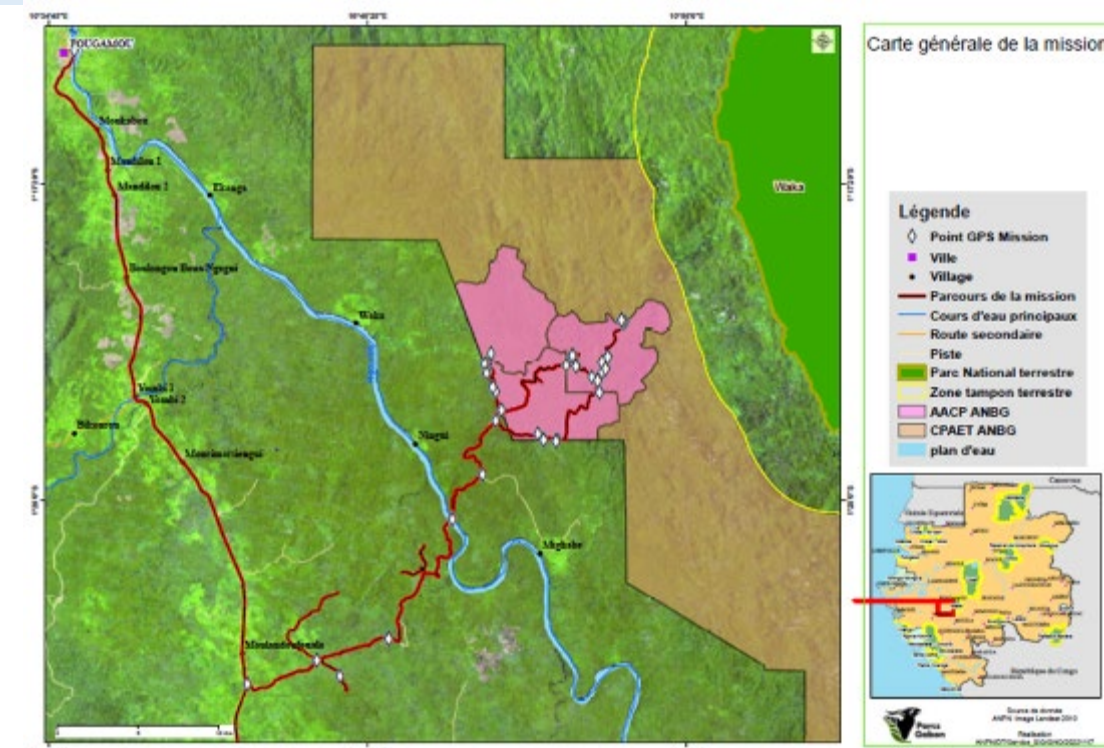
5. Operation “Pandora”

How it works

- Stage 1: Investigation and survey in civilian clothes in the Mouloudou Fouala camps and village (3 days),
- Stage 2: Research and observation of infractions in the forest concession, facilitated by the eco-guards of the Waka National Park, who have a fairly good knowledge of all the tracks and roads in the area (timber yards, skidding and administrative offices).

Report

- No poaching or illegal gold-mining,
- Illegal logging by a number of players (TBNI, Jr Negoce, ANBG, ZBP, an individual for pit-sawing, etc.):
 - Bull lender,
 - Absent proxy on site,
 - Undeclared wood yard,
 - Fraudulent cutting and sale of wood,
 - Fraudulent and undated slips (7),
 - Logging outside the AAC and the licence, overproduction of CFAF 1,501,862,150 (USD 247,837.97),
 - Involvement of administrative staff (2 staff)



6. Some proposed solutions for the Minkébé forest block

On the national level

- Ongoing support from the FAG since then,
- Setting up of:
 - a task force (DGR, Counter Interference, Judicial Police, Public Prosecutor's Office... for special (multidisciplinary) missions)
 - a programme of reflection to make the Libreville special court more effective,
 - a commission to involve local communities in all protected areas (terrestrial and aquatic),
 - Revenue-generating activities around protected areas

Cross-border and international

- Draw up a cross-border land use plan (to harmonise the conservation, eco-development and co-prosperity dynamics of cross-border communities),
- Set up:
 - local groups of cross-border cooperatives,
 - Cross-border monitoring and exchange units: the case of TRIDOM,
 - dynamic inter-State exchange platforms specifically for combating illegal logging and monitoring cross-border security.



Thank you for your kind attention