



# AFRICA'S ACTIVE MILITANT ISLAMIST GROUPS

**TUNISIA**

- Okba ibn Nafaa Brigade
- Shabab al Tawhid (a.k.a. Ansar al Sharia Tunisia (AST))
- Soldiers of the Caliphate (a.k.a. Jund al Khilafah) (targeting both Algeria and Tunisia)

**ALGERIA**

- Al Qaeda in the Islamic Maghreb (AQIM)

**MALI/BURKINA FASO**

- Jama'at Nusrat al Islam wal Muslimin (JNIM) (f.k.a. the following regional AQIM affiliates:
  - the Sahara Emirate branch of AQIM
  - Al Mourabitoun
  - Ansar Dine
  - Macina Liberation Front (FLM))
- Ansaroul Islam
- Movement for Unity and Jihad in West Africa (MUJAO)
- Islamic State in the Greater Sahara (ISGS)

**NIGERIA**

- Boko Haram
- Islamic State West Africa (ISWA) (a.k.a. Wilayat Gharb Afriqiyah)

**LIBYA**

- Ansar al Sharia Libya (ASL)
- Al Mourabitun (primarily targeting Egypt)
- Islamic State in Libya (f.k.a. Wilayat Barqa, Wilayat Fezzan, and Wilayat Tarabulus)

**EGYPT**

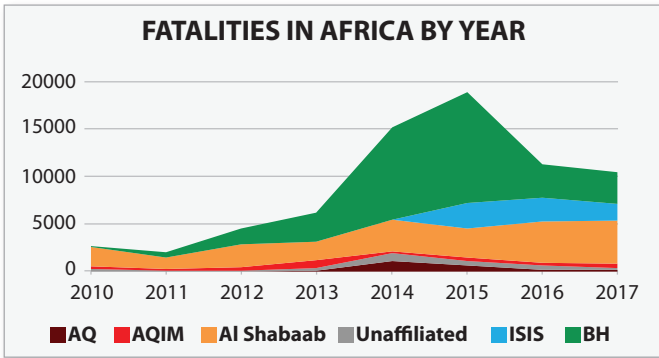
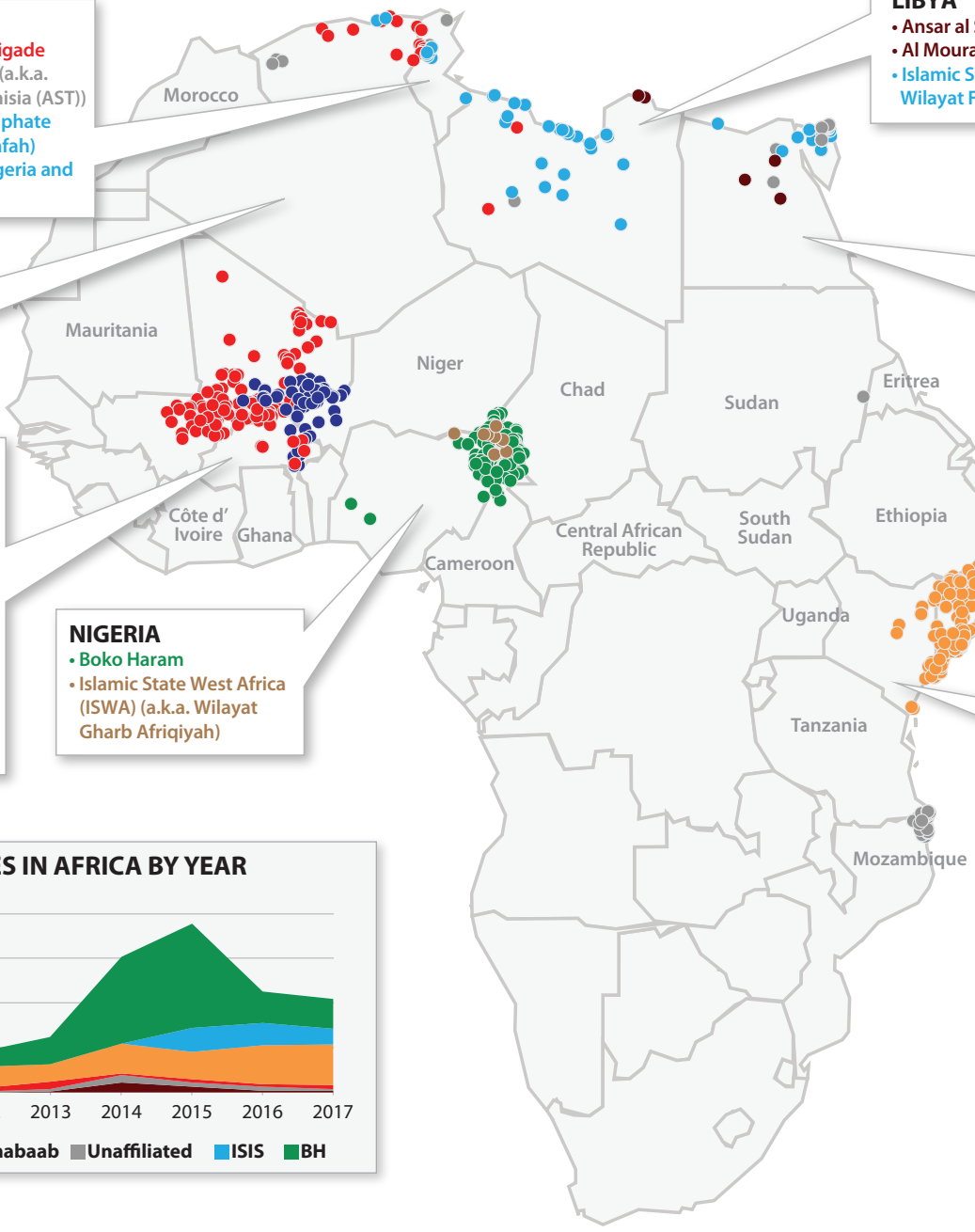
- Ansar al Islam
- Jund al Islam
- Islamic State in Sinai (a.k.a. Wilayat Sinai) (f.k.a. Ansar Beit al Maqdis (ABM))
- Islamic State in Egypt

**SOMALIA**

- Al Shabaab
- Islamic State in Somalia (ISS) (a.k.a. Abnaa ul Calipha)

**KENYA**

- Al Hijra (f.k.a. Muslim Youth Center)
- Al Muhajiroun (a.k.a. Emigrants of East Africa)
- Jahba East Africa (a.k.a. Islamic State in Somalia, Kenya, Tanzania, and Uganda (ISSKTU))



**ATTACKS**

- AQIM and affiliates
- Al Qaeda-linked groups
- Al Shabaab and affiliates
- Unidentified/unaffiliated groups
- Boko Haram
- ISIS affiliates
- ISWA
- ISGS and affiliates
- ISS and affiliates

"a.k.a." = also known as  
 "f.k.a." = formerly known as

**Updated:** October 2018  
**Note:** Compiled by the Africa Center for Strategic Studies, this graphic shows violent events involving the listed groups over the 12-month period ending September 30, 2018. Data on attacks or fatalities does not attempt to distinguish the perpetrators of the events. Group listings are intended for informational purposes only and should not be considered official designations. Due to the fluid nature of many groups, the listed affiliations may change.  
**Sources:** Armed Conflict Location & Event Data Project (ACLED); Daniel Byman; Jane's Terrorism and Insurgency Centre; Thomas Joscelyn; SITE Intelligence Group; The Soufan Group; Stanford University's Mapping Militants Project; Stratfor; Terrorism Research & Analysis Consortium (TRAC); and Aaron Y. Zelin.