



**AFRICA CENTER
FOR STRATEGIC STUDIES**

Africa's Contemporary Security Challenges Seminar

**Plenary 4: Riots and Protests:
Cameroon & South Africa**

Elke Zuern

Protest in South Africa:

Causes, Responses and Policy Considerations

Elke Zuern

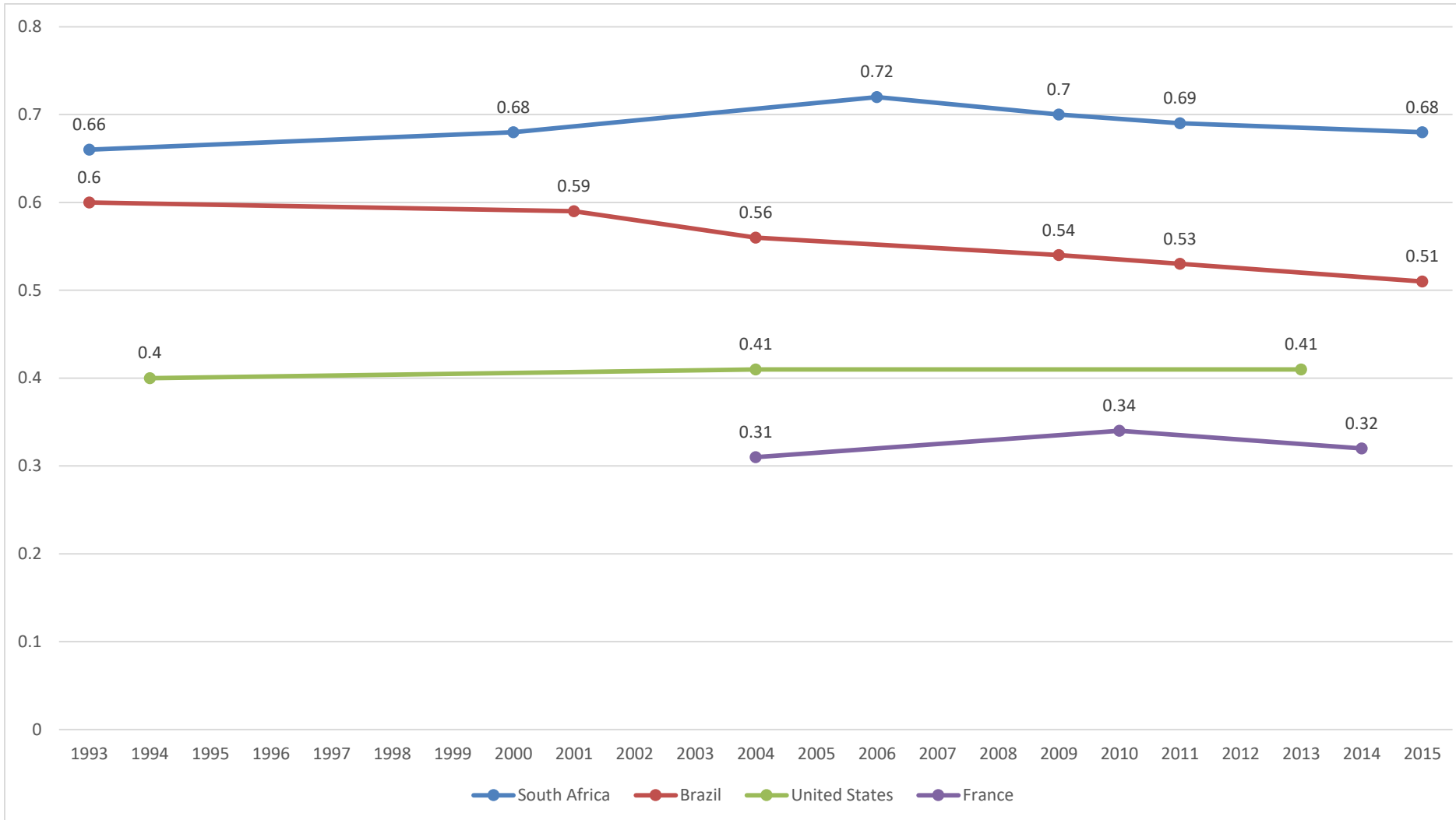
Sarah Lawrence College

ezuern@slc.edu



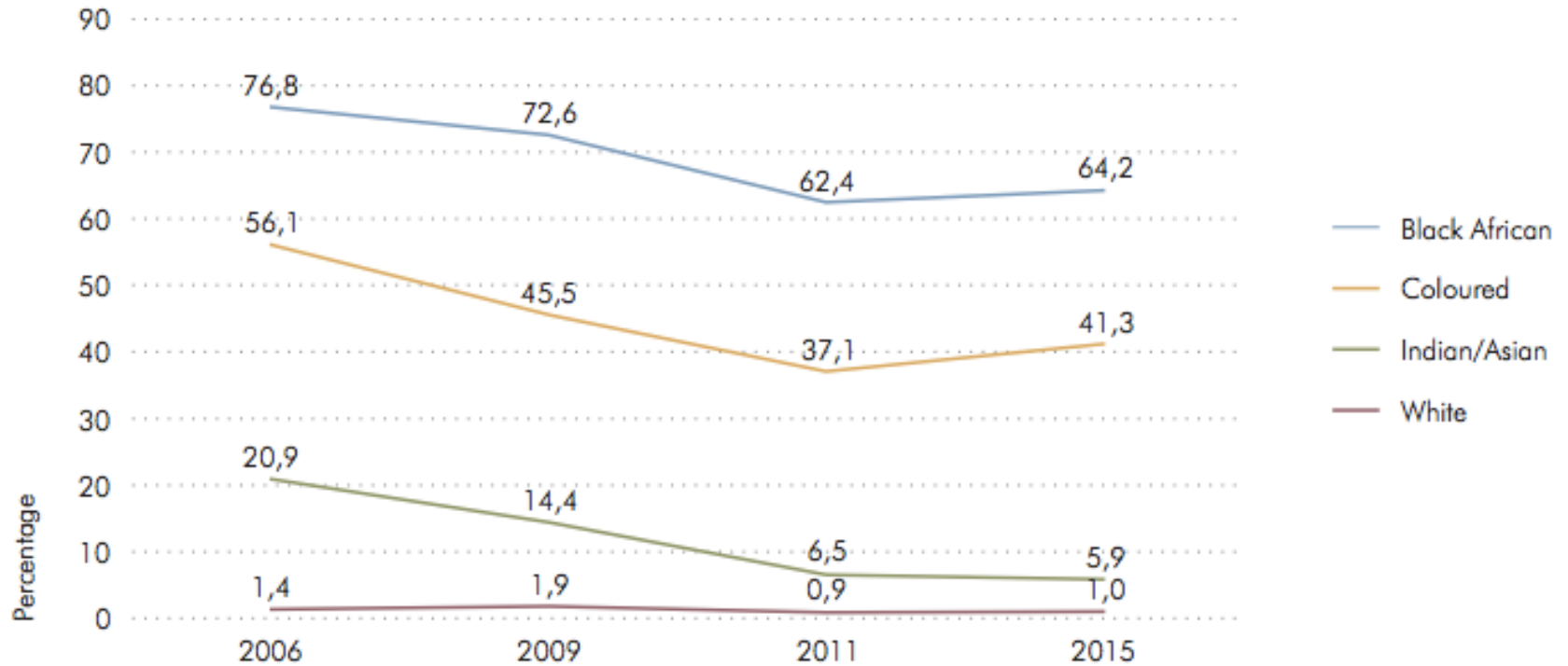


Income Inequality – Gini Coefficients



SA Data: Stats SA – Brazil, US, France: World Bank

Poverty Headcount by Population Group (UBPL)



Comparing Unemployment

US Unemployment -

Great Depression 1933 – 25%

Great Recession 2009 – 10%

August 2018 – 3.9%

South Africa Unemployment (2nd Q 2018)

27.2% (excluding discouraged work seekers)

35.5% (including discourage work seekers)

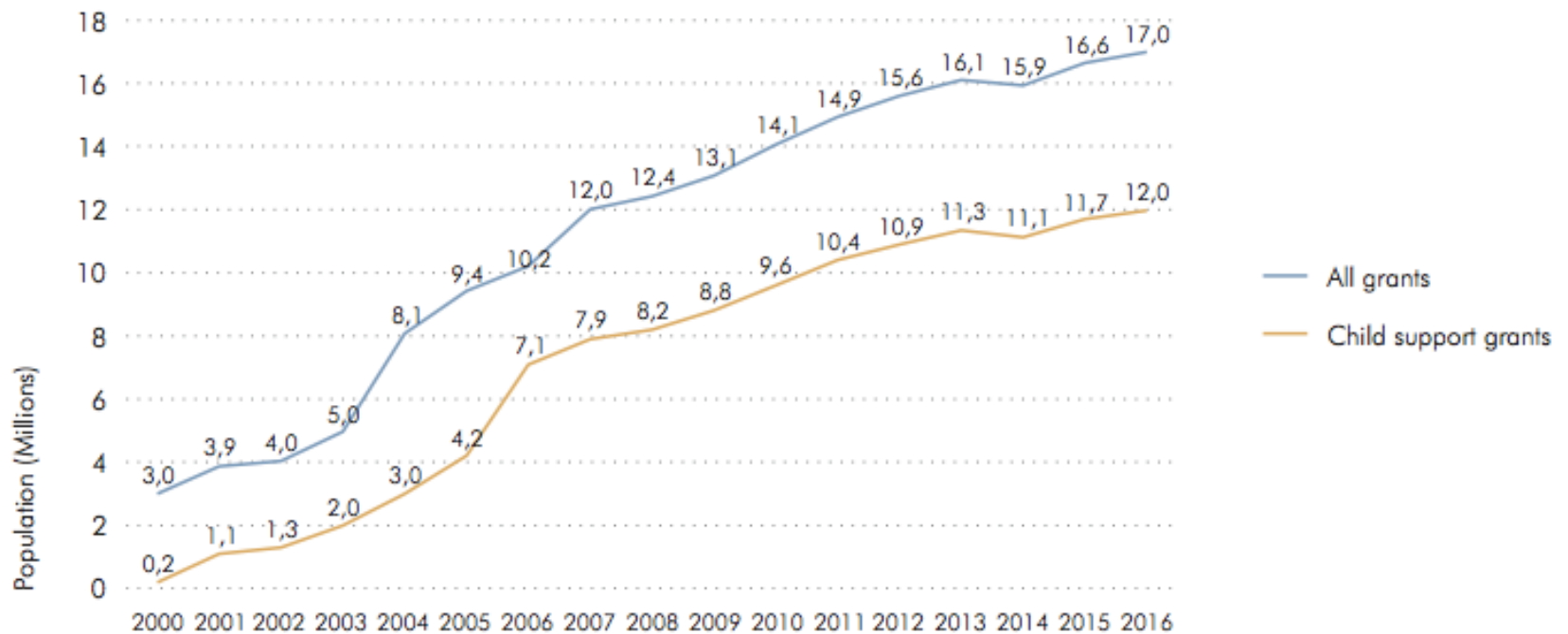
SA Youth Unemployment (age 15-24, 1st Q 2018)

over 52% (excluding discouraged work seekers)

Proportion of Households with Access to Listed Services

Year	Electricity	Piped water	Flush toilet
1996	58,2	60,8	-
2001	69,7	62,3	49,1
2007	80,1	69,4	55,0
2011	84,7	73,4	57,0
2016	90,3	83,5	60,6

Number of Social Grants Disbursed





AFRICA CENTER
FOR STRATEGIC STUDIES

www.africacenter.org